



## SCORPION VISION SOFTWARE®

### SCORPION BARCODE



Barcode verification

Scorpion Barcode is another application from the family of Scorpion Vision Software products. Scorpion Barcode is Scorpion Lite with an integrated Euresys EasyBarCode™ Reader module. Scorpion Barcode can be upgraded to handle ECC 2D Matrix-Code in addition to 1D Barcodes.

Scorpion Barcode has the following features:

- Standard DirectX interface to Windows Cameras
- Real time Image Display
- Database connectivity
- Python Script Kernel

Typical usages for barcodes are: Product identification, bar code verification, sym-

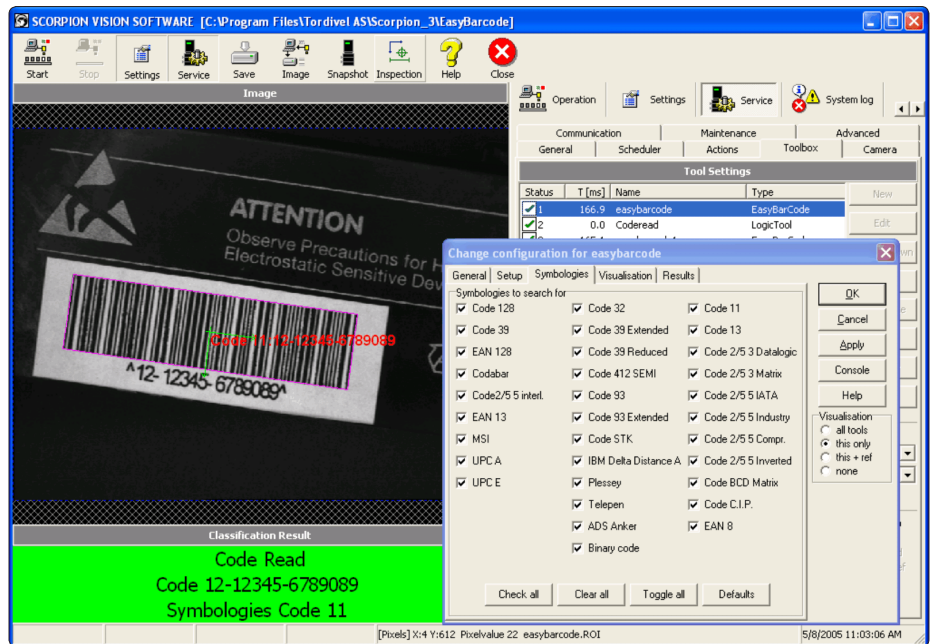
bolologies identification. The EasyBarCode™ has the following features:

- Automatic bar code location
- Automatic symbology detection
- Full support of many symbologies
- Very fast and robust

Bar codes encode short character strings and are widely used for marking and identifying goods. EasyBarCode™ is able to identify and read a wide range of standard commonly used symbologies as well as additional symbologies. EasyBarCode™ automatically locates the bar code symbol in the image. Moreover, for prototyping or special cases, an advanced manual location mode is also available.

#### ADVANCED FEATURES:

- Bar code translation, rotation and scaling support
- Automatic compensation of illumination changes
- Direct contrast (black on white) and inverse contrast (white on black) support
- Checksum validation



Camera Based Automatic Barcode Reader Software supporting Multiple Readers on one PC.



#### SUPPORTED SYMBOLOGIES:

##### Standard symbologies

Code 128	Codabar	MSI
Code 39	Code 2/5 5 Interleaved	UPC A
EAN 128	EAN 13	UPC E

##### Additional symbologies

Code 32	Plessey	MSI
Code 39 Extended	Telepen	UPC A
Code 39 Reduced	ADS Anker	UPC E
Code 412 SEMI	Binary code	Code 2/5 5 Bars Inverted
Code 93	Code 11	Code BCD Matrix
Code 93 Extended	Code 13	Code C.I.P.
Code STK	Code 2/5 3 Bars Datalogic	Ean 8
IBM Delta Distance A	Code 2/5 3 Bars Matrix	

#### TECHNICAL DATA 10-011 SCORPION BARCODE

##### Operating System

- Windows 2000 / Windows XP
- DirectX 8.1 or higher

##### Minimum Requirements

- Intel Pentium III 400 MHz
- 128 MB of RAM
- 25 MB free hard drive space

##### Language Support

- English and Norwegian

##### Image

- Save format: jpeg, 8 and 24 bits windows bitmap
- No restriction on image size

##### Camera

Up to 16 cameras can be connected to one PC. Images can be captured with a speed

of up to 30 images per second.

Generic windows, firewire, USB and USB2 cameras through a generic DirectX interface.

Firewire Cameras: All IIDC compliant firewire cameras through Unibrains generic drivers. Firewire cameras from the following vendors are supported:

Unibrain, ADS, Allied Vision, Basler Vision, Hamamatsu, JVC, MicroPix, OrangeMicro, PixeLink, PointGrey, Sony, Teli, Imaging Source, Baumer Optronics and Victor

Note: Image capture speed and camera connections are limited only by the PC configuration.

*Specifications might change without any notification.*

Tordivel AS  
Phone +47 2315 8700  
Fax +47 2315 8701  
office@tordivel.com  
www.scorpionvision.com  
FNR: NO 966 813 946 MVA

EasyBarcode™ is a trademark of Euresys s.a.  
Scorpion Vision Software® is a registered trademark of Tordivel AS.